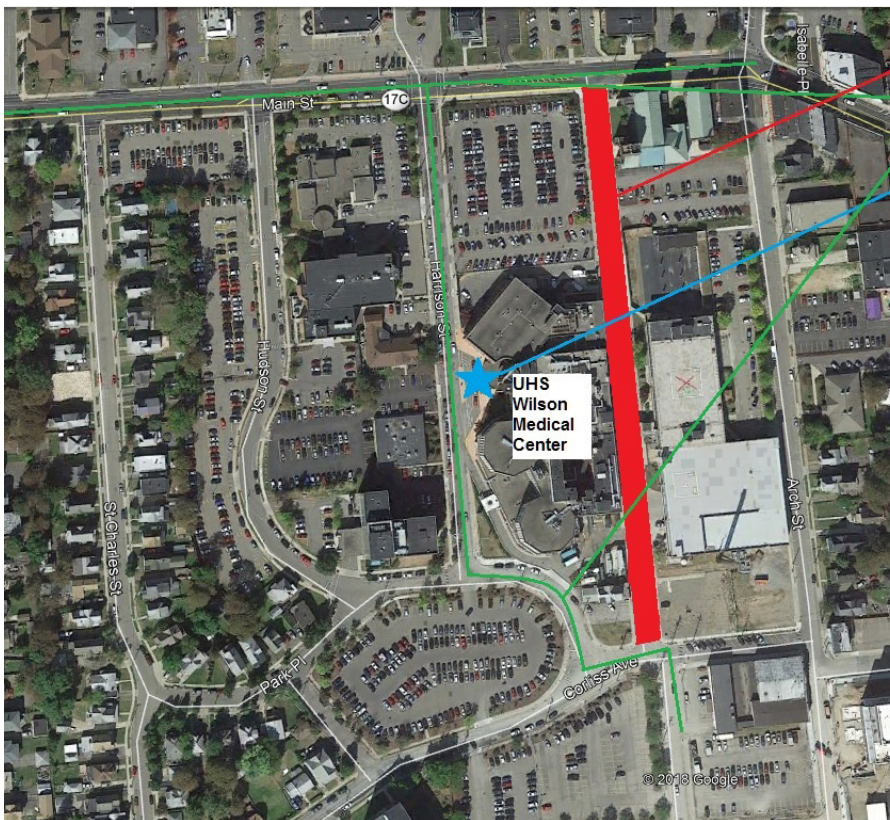


SPECIAL NOTICE: EMS, 911 Centers, Fire and Law Enforcement

Baldwin Street, from Corliss Avenue to Main Street, will be closed to all vehicles, beginning at 7:00 a.m. on Saturday, June 30th.



Baldwin Street - Closed
 Ambulance Arrival Route - From North
 Ambulance Arrival Route - From South
 Alternate Ambulance Unloading
 Area for UHS Wilson Medical Center
 Emergency Department

In order to allow for paving, Baldwin Street, from Corliss Avenue to Main Street, will be closed to all vehicles, including Emergency Medical Services (EMS), beginning at 7:00 a.m. on Saturday, June 30th.

During this time, UHS Wilson Medical Center will be activating an Alternate Ambulance Unloading Area in the Decker Center Turnaround, located on Harrison Street.

An announcement will be made once the repaving has been completed and the normal Ambulance Bay, located on Baldwin Street, has been reopened.

Any questions or concerns may be directed to on-site Security staff, through the Hospital Operator, at (607)763-6000.